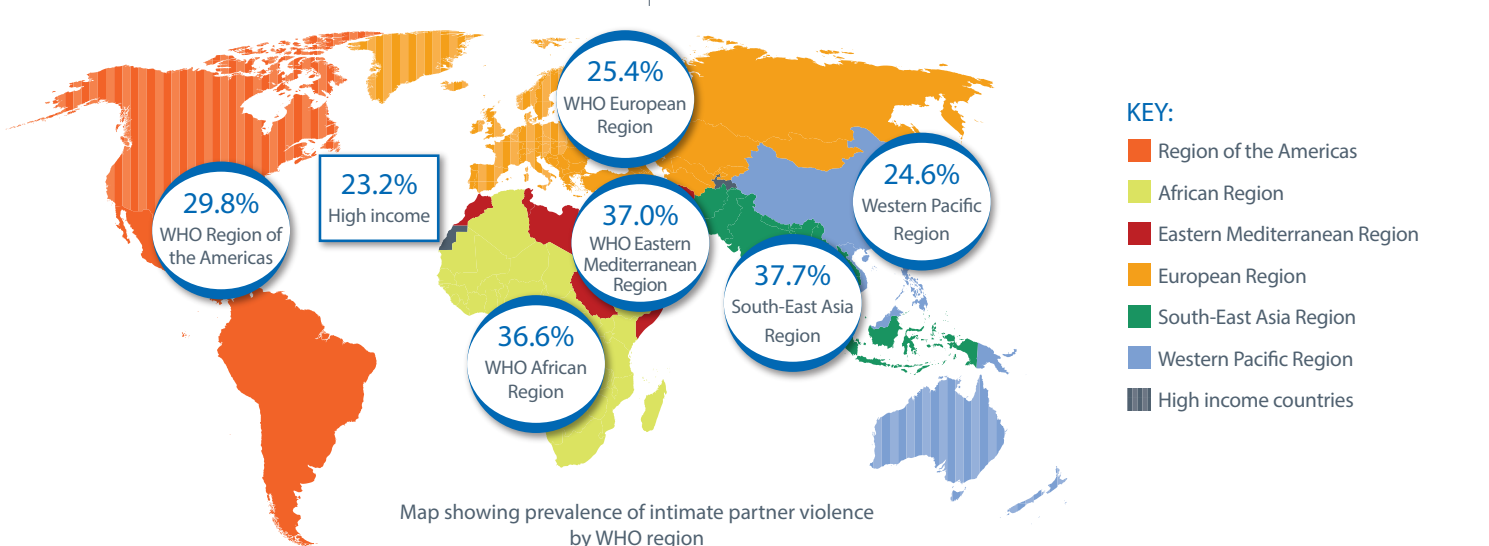


# VIOLENCE AGAINST WOMEN: GLOBAL PICTURE

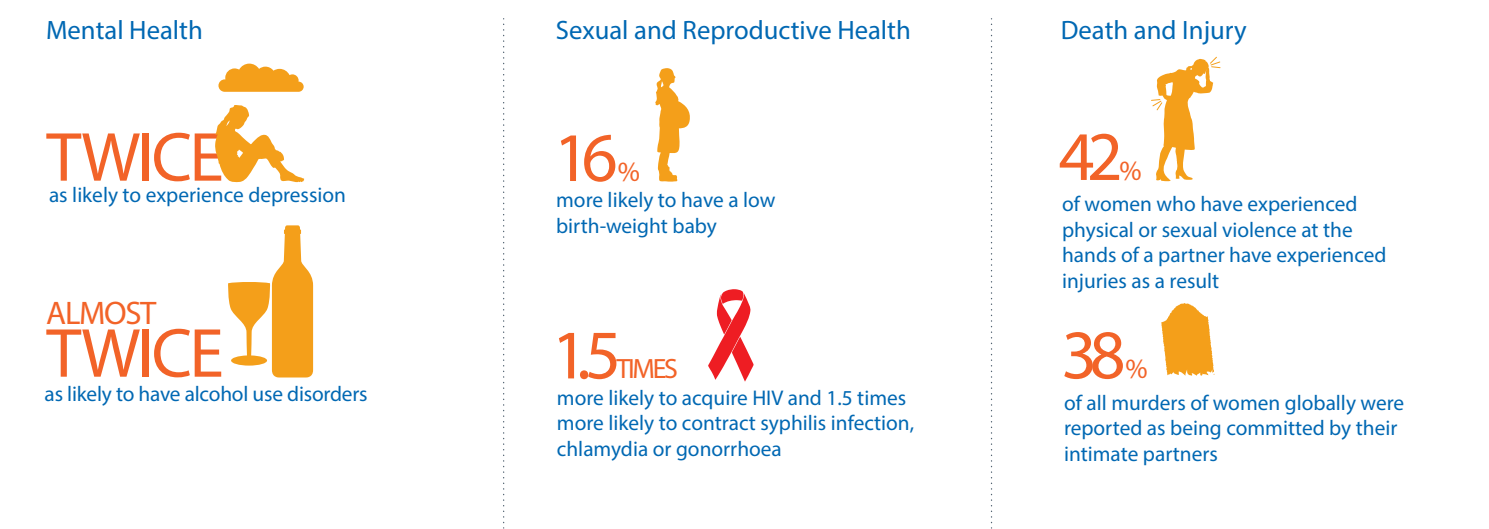
## HEALTH RESPONSE

### PREVALENCE →

**1 in 3 women** throughout the world will experience physical and/or sexual violence by a partner or sexual violence by a non-partner



### HEALTH IMPACT: Women exposed to intimate partner violence are →



### GUIDELINES FOR HEALTH SECTOR RESPONSE →

WHO's new clinical and policy guidelines on the health sector response to partner and sexual violence against women emphasize the urgent need to integrate these issues into clinical training for health care providers. WHO has identified the key elements of a health sector response to violence against women which have informed the following recommendations:



### HEALTH-CARE WORKER INTERVENTION →

Violence against women is a global public health problem of epidemic proportion, requiring urgent action. Health-care providers are in a unique position to address the health and psychosocial needs of women who have experienced violence, provided certain minimum requirements are met:



- ✓ Health-care providers are trained
- ✓ Standard operating procedures are in place
- ✓ Consultation takes place in a private setting
- ✓ Confidentiality is guaranteed
- ✓ A referral system is in place to ensure that women can access related services
- ✓ Health-care settings are equipped to provide a comprehensive response, addressing both physical and mental consequences
- ✓ Health-care providers gather forensic evidence when needed